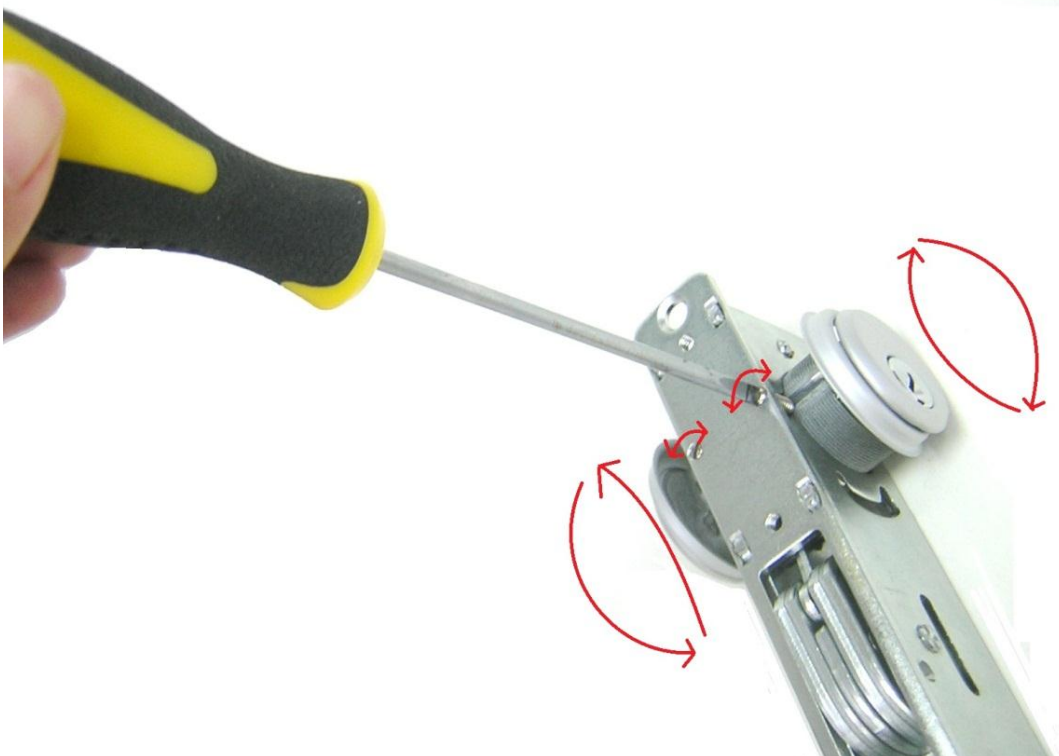


Easy to install mortise cylinder and faceplate onto the mortise lock

1. We need a standard tip screwdriver and a phillip tip screwdriver for installation.



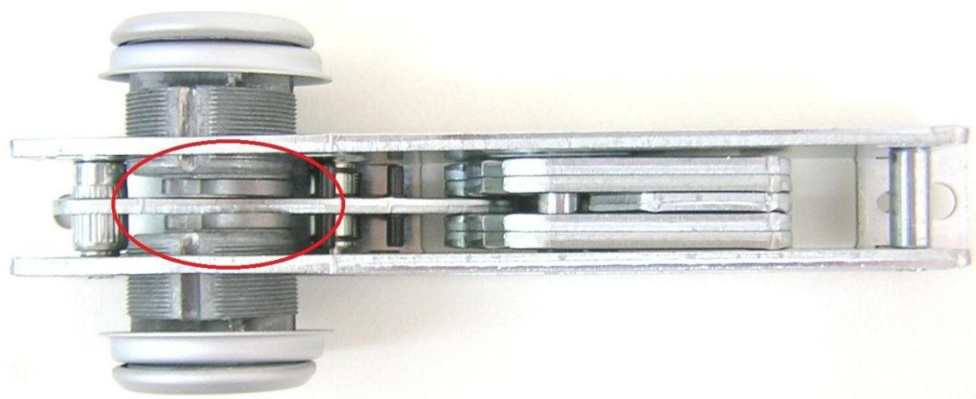
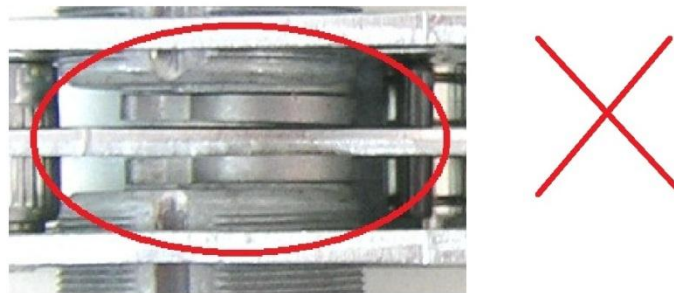
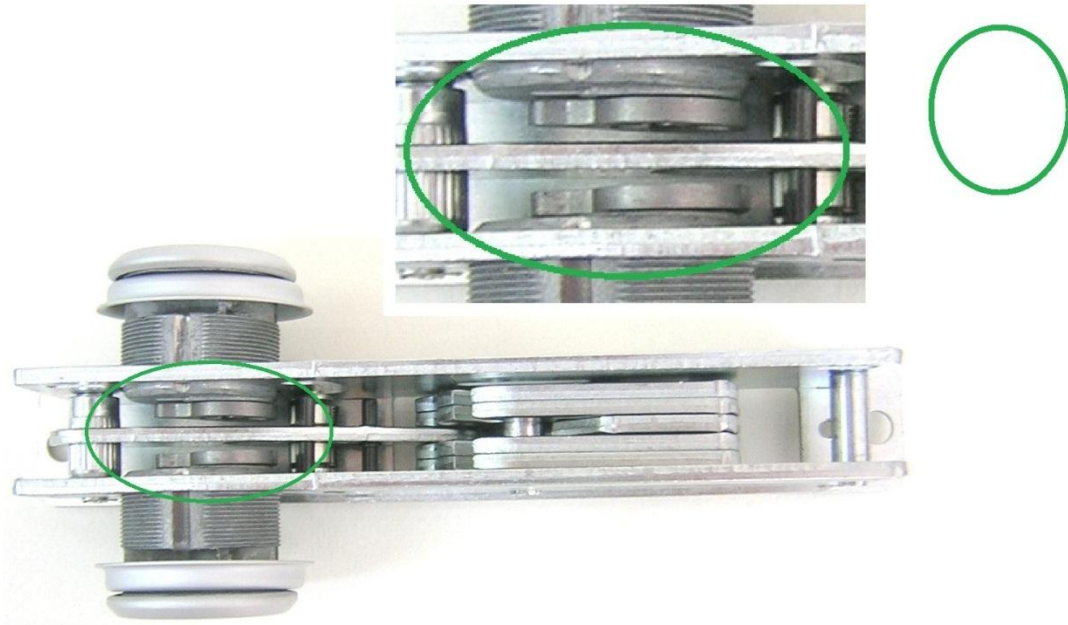
2. Please loosen two screws by standard tip screwdriver and screw in two mortise cylinders.
Please tighten two screws after two mortise cylinder be screwed in.



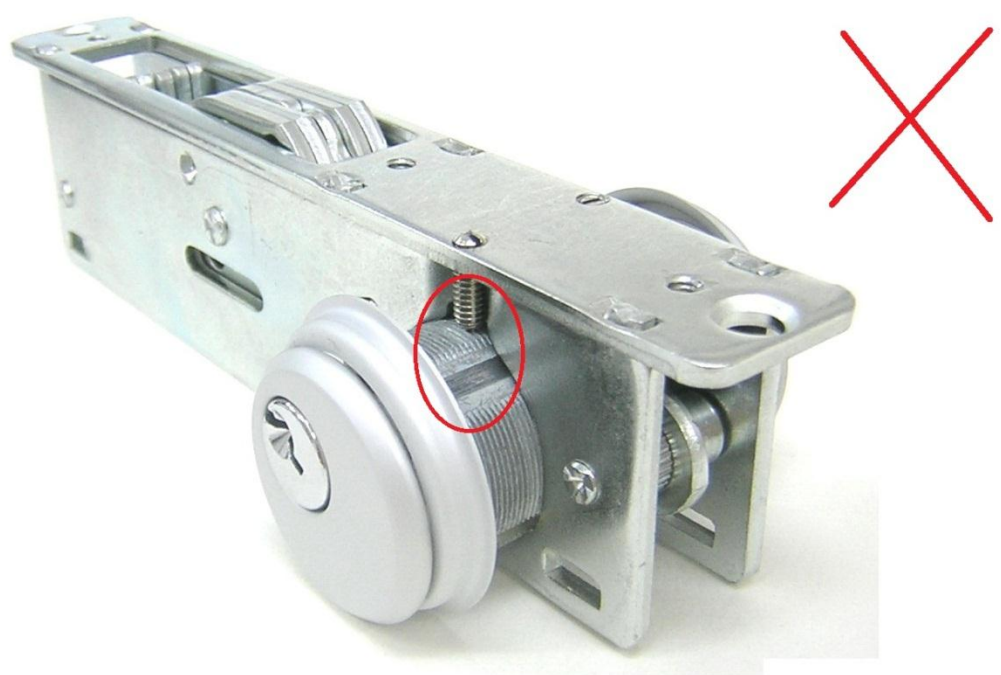
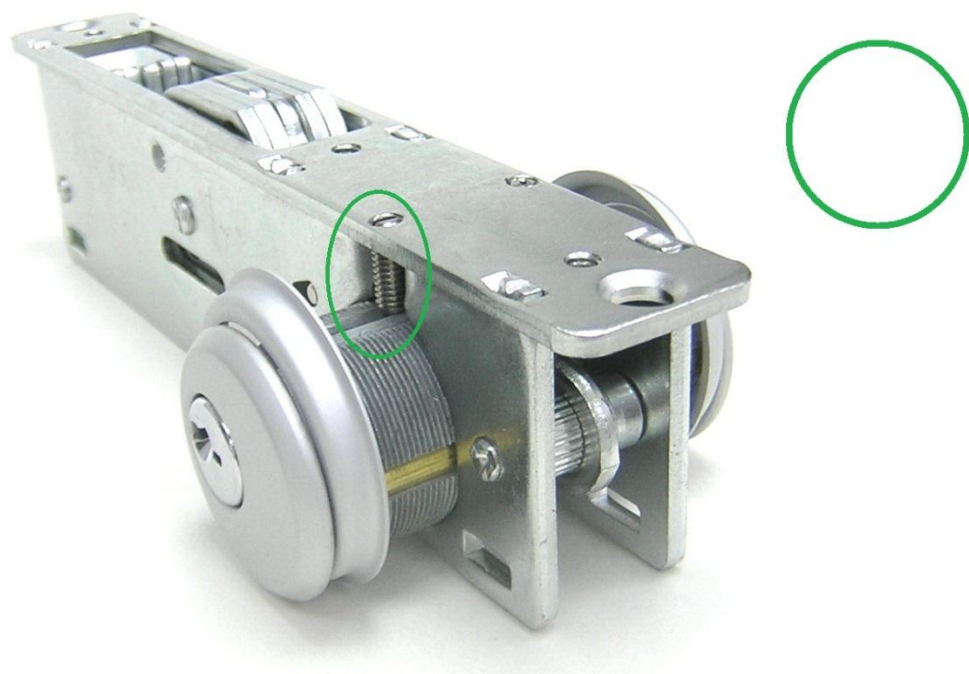
a. Please notice that mortise cylinders should be installed in the correct direction(as below pictures show).



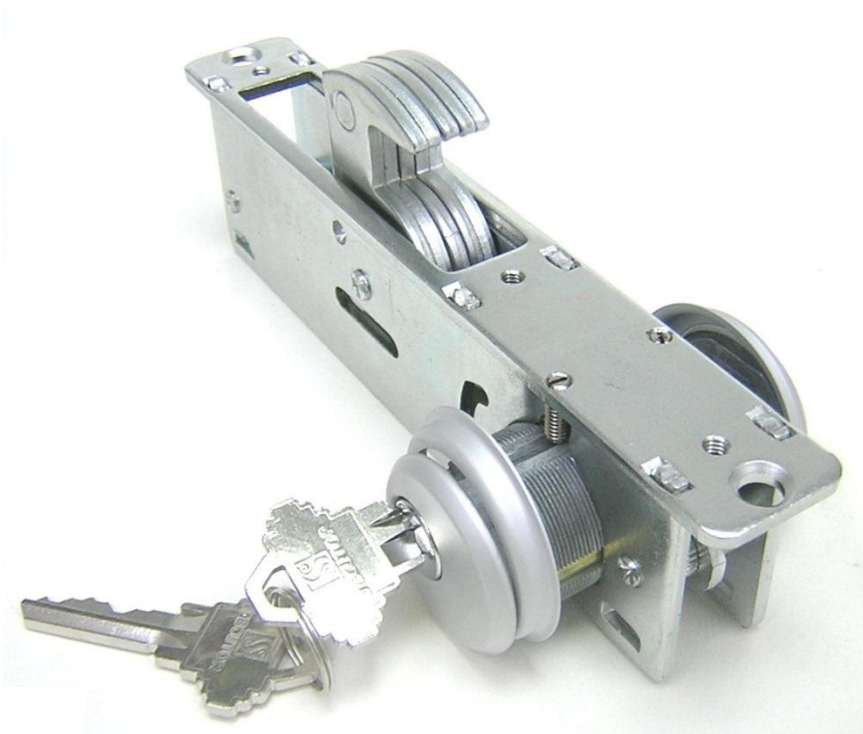
b. Please leave a space between the cams of mortise cylinder and mortise lock. Don't let the cams of mortise cylinders touch the mortise lock (as below pictures show).



C. Please make sure the screw is inserted into the slot of mortise cylinders.



D. Try to lock and unlock the door by keys.



E. Install the faceplate onto the mortise lock by phillip tip screwdriver.

